

L TIMING PULLEYS

0.375" Trapezoidal Pitch

For 0.750" Wide Belts

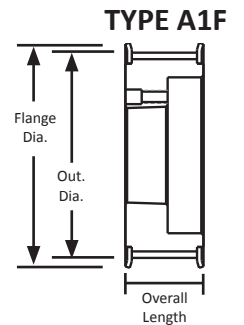
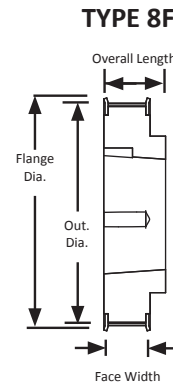
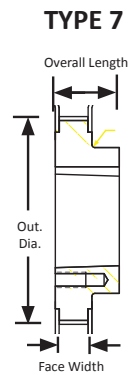
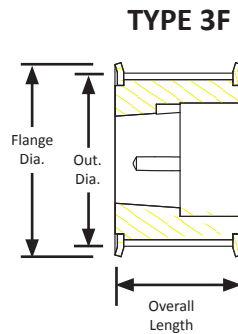
Steel/Iron

Black Oxide Plating

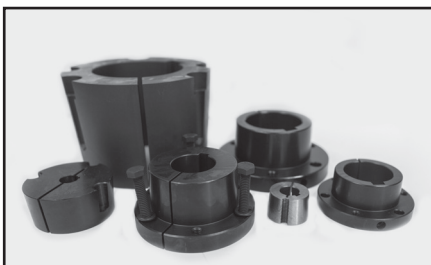
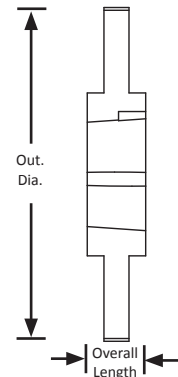
Taper-Lock® style



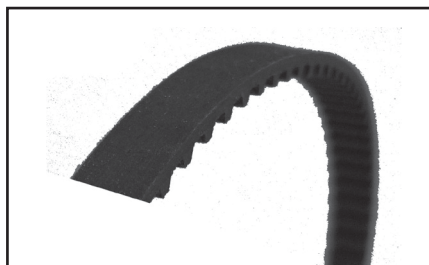
| Part Number | No. of Teeth | Type | Pitch Dia. (in) | Out. Dia. (in) | Flange Dia. (in) | Bushing | Face Width (in) | Overall Length (in) |
|---------------|--------------|------|-----------------|----------------|------------------|---------|-----------------|---------------------|
| TL18L075-1008 | 18 | 3F | 2.149 | 2.119 | 2.375 | 1008 | 1.000 | 1.000 |
| TL18L075-1108 | 18 | 3F | 2.149 | 2.119 | 2.375 | 1108 | 1.000 | 1.000 |
| TL20L075-1008 | 20 | 3F | 2.387 | 2.357 | 2.625 | 1008 | 1.000 | 1.000 |
| TL20L075-1108 | 20 | 3F | 2.387 | 2.357 | 2.625 | 1108 | 1.000 | 1.000 |
| TL22L075-1008 | 22 | 3F | 2.626 | 2.596 | 2.875 | 1008 | 1.000 | 1.000 |
| TL22L075-1108 | 22 | 3F | 2.626 | 2.596 | 2.875 | 1108 | 1.000 | 1.000 |
| TL24L075 | 24 | 3F | 2.865 | 2.835 | 3.094 | 1210 | 1.000 | 1.000 |
| TL26L075 | 26 | 3F | 3.104 | 3.074 | 3.330 | 1210 | 1.000 | 1.000 |
| TL28L075 | 28 | 3F | 3.342 | 3.312 | 3.566 | 1610 | 1.000 | 1.000 |
| TL30L075 | 30 | 3F | 3.581 | 3.551 | 3.800 | 1610 | 1.000 | 1.000 |
| TL32L075 | 32 | 3F | 3.820 | 3.790 | 4.044 | 1610 | 1.000 | 1.000 |
| TL36L075 | 36 | A1F | 4.297 | 4.267 | 4.520 | 1610 | 1.000 | 1.000 |
| TL40L075 | 40 | 8F | 4.775 | 4.745 | 4.520 | 2012 | 1.000 | 1.250 |
| TL48L075 | 48 | 8F | 5.730 | 5.700 | 5.000 | 2012 | 1.000 | 1.250 |
| TL60L075 | 60 | 7 | 7.162 | 7.132 | - | 2012 | 1.000 | 1.250 |
| TL72L075 | 72 | C1 | 8.594 | 8.564 | - | 2012 | 1.000 | 1.250 |
| TL84L075 | 84 | C1 | 10.027 | 9.997 | - | 2517 | 1.000 | 1.750 |



TYPE C1



For matching Taper-Lock® bushings, see page 373.



For matching L pitch belts, see page 194.